



# ALS Canada Equipment Catalogue



# Table of Contents

About the Equipment Program .....	2
Small Bathroom Items .....	3-4
Bathroom Equipment .....	5-6
Walkers .....	7
Wheelchairs .....	8-9
Cushions .....	10-11
Scooters .....	12
Slings .....	13-14
Lifts and Transfers .....	15-17
Mattress Overlays .....	18
Hospital Mattresses .....	19-21
Hospital Beds .....	22-23

# Equipment Program

ALS Canada helps people diagnosed with ALS to cope with the daily challenges of decreasing mobility and communication ability. Access to equipment and assistive devices is essential for the safety, comfort, independence, and functioning of a person living with ALS.

The ALS Canada Equipment Program provides access to basic and essential assistive equipment through:

- the loan equipment program;
- purchase of small bathroom equipment; and
- funding assistance program for some leased and rented equipment.

To find out more about the programs and learn about eligibility, please review the [Program Overview](#).

The following photos outline the items available through the Loan Equipment Program including small bathroom items purchased new.

Individuals registered with ALS Canada are eligible to receive one of each type of equipment with the exception of the slings, where they are eligible to receive one standard and one hygiene sling.

---

## How to Apply

To access the ALS Canada Equipment Program, please have your Occupational Therapist, Physiotherapist, or other Allied Professional complete the following online forms:

- [Equipment Loan Application](#)
- [Equipment Funding Application](#)

Our Equipment Program Coordinators will process the request.

For any questions, please reach out to **equipment@als.ca** or call **1-800-267-4257**

# Small Bathroom Items

Small bathroom items are purchased new for clients registered with ALS Canada. Please select the requested item(s) using the online [Equipment Loan Application](#).



## Versaframe

Dimensions: varied and adjustable



## Tub Transfer Bench

Dimensions: varied and adjustable

\*Please specify preferred side for handle



## Bath Chair Or Bath Stool

Dimensions: varied and adjustable



## Raised Toilet Seat

Dimensions: varied and adjustable

\*Please specify the shape of the seat, the height of the seat, and whether you would like a seat with arms.



## Stationary Commode

Dimensions: varied and adjustable

# Bathroom Equipment

Large Bathroom Equipment is provided through the loan equipment program. Individuals registered with ALS Canada are eligible to receive one bath lift, sliding tub transfer bench, tilt commode, and one wheeled OR shower commode.



## Sliding Tub Transfer Bench

Seat width dimensions: 18.75" to 22.5"

Seat depth dimensions: 13" to 18.5"

Product Height: 19" to 25"

Base Length: 39.5 to 40.5"

Base Depth: 19" to 20.5"

Client weight limit: 300lbs



## Bath Lift

Seat width dimensions (approx.): 15" to 16", 28" to 29" with flaps down (Wide model: 34" with flaps down)

Seat depth dimensions (approx.): 19"

Weight Capacity: up to 300lbs

Back (approx.): 14" (W) x 23" (H)

Base (approx.): 11" (W) x 23" (L)

Lift adjustment: 2.5" (min) to 17" (max)



## Wheeled Commode

Seat dimensions (approx.): 18" (W) x 17" (D)

Client weight limit: up to 275lbs

---



## Shower Commode

Seat dimensions (approx.): 18" (W) x 17" (D)

Client weight limit: up to 300lbs

---



## Tilt Shower Commode

Seat dimensions (approx.): 18" (W) x 17" (D)

Client weight limit: up to 300lbs

# Walkers

Individuals registered with ALS Canada are eligible to receive one piece of equipment in this section.



## 2 Wheeled Walker

Handle height: Adjustable

Weight capacity: 300lbs to 500lbs

Folding model available



## 4 Wheeled Walker (rollator available)

Handle height: adjustable

Seat height: varies

Weight capacity: 300lbs to 500lbs

Folding model available

\*Please specify handle and seat height

# Wheelchairs

Individuals registered with ALS Canada are eligible to receive wheelchairs on a per need basis.



## Manual Wheelchair

Seat width dimensions: 16" to 20"

Seat depth dimension: 16" to 20"

Weight capacity: 250lbs to 350lbs

Type 2 or 3



## Transport Wheelchair

Seat width dimensions: 16" to 20"

Seat depth dimension: 16"

Weight capacity: 250lbs to 350lbs



## Manual Tilt Wheelchair

Seat width dimensions: 16" to 20"

Seat depth dimension: 16" to 20"

Weight capacity: 250lbs to 350lbs

Type 5



## Power Chair without Tilt

Seat width dimensions: 16" to 20"

Seat depth dimension: 16" to 20"

Weight capacity: 250lbs to 350lbs

Joystick: Left or right

Please note that our equipment is donated by members of the community. Although we will try to accommodate the client's needs as much as possible, we cannot ensure exact wheelchair specifications.

# Cushions

Individuals registered with ALS Canada are eligible to receive equipment from this section on a per need basis. Both high-profile and low-profile cushions are available.



## Foam Cushion

Cushion width dimensions: 16" to 20"

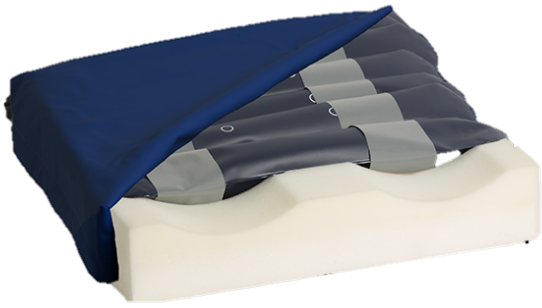
Cushion depth dimensions: 16" to 20"



## Gel Cushion

Cushion width dimensions: 16" to 20"

Cushion depth dimensions: 16" to 20"



## Air Cushion

Cushion width dimensions: 16" to 20"

Cushion depth dimensions: 16" to 20"



## ROHO Cushion

Cushion width dimensions: 16" to 20"

Cushion depth dimensions: 16" to 20"

# Scooters

Individual registered with ALS Canada are eligible to receive one piece of equipment in this section.



## 3 Wheeled Scooter

Product weight capacity: 300lbs to 500lbs



## 4 Wheeled Scooter

Product weight capacity: 250lbs to 500lbs

# Slings

Individuals registered with ALS Canada are eligible to receive one Hygiene Sling and one additional sling (Universal or Hammock). Each sling is available with or without head support.



## Universal Sling (a.k.a. split/divided/U)

Sizes: Small, medium, large



## Hammock Sling

Size: Small, medium, large



## Hygiene Sling (Toileting Sling)

Size: Small, medium, large

# Lifts and Transfers

Individuals registered with ALS Canada are eligible to receive one lift from this section and additional support such as a Superpole, Ramp, or Easy Lift Chair on as per need basis.



## Hoyer Lift

Leg dimensions (depending on model):

- Open width: 39" to 43.5"
- Closed width: 23" to 25"

Product height: 23" (min) to 71" (max)

Client weight limit: 300lbs to 400lbs



## Ceiling Lift

Dimensions: Varied and adjustable

\*Please note that although ALS Canada will provide the ceiling lift through the equipment loan program, the client will be responsible for the costs of installation.

---



## Pressure Fit System or Free Standing Lift System

---



## Superpole

Dimensions: Varied and adjustable

This item is available with or without the horizontal bar.



## Ramp

Ramp length: 3.5 ft to 10 ft

Foldable and portable



## Easy Lift Chair

Sizes: Small, medium large

Type: 3 positions

# Mattress Overlays

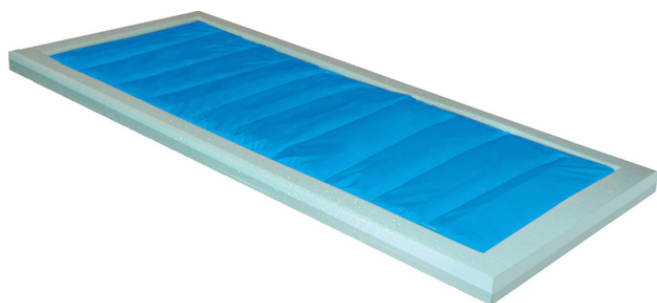
Individual registered with ALS Canada are eligible to receive one piece of equipment in this section.



## Air Overlay

Dimensions: 35" (W) x 72" (L) x 2.5" (H)

Product weight capacity: up to 250lbs



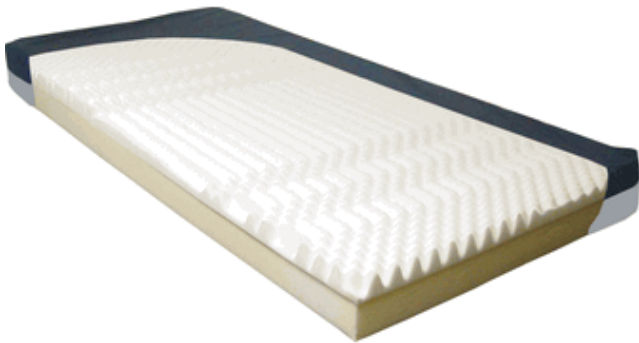
## Gel Overlay

Dimensions: 36" (W) x 76" (L) x 3.5" (H)

Product weight capacity: up to 250lbs

# Hospital Mattresses

Individuals registered with ALS Canada are eligible to receive one piece of equipment in this section.



## Foam Mattress

Dimensions: 35" (W) x 80" (L) x 6" (H)

Product weight capacity: up to 350 lbs



## Therapeutic Foam Mattress

Dimensions: 36" (W) x 80" (L) x 5.5"-6" (H)



## Low Air Loss Mattress

Dimensions: 36" (W) x 80" (L) x 8" (H)

Product weight capacity: 300lbs - 350lbs



## Air Mattress with Alternating Air

Dimensions: 35" (W) x 80" (L) x 8" (H)



## Pressure Guard Mattress

Dimensions: 35" (W) x 80" (L) x 7" (H)

Product weight capacity: 500lbs

## V2 Mattress

Dimensions: 36" (W) x 80" (L) x 5.5" - 6" (H)

Product weight capacity: up to 350lbs



---

## V4 with ROHO Inserts

Dimensions: 36" (W) x 80" (L) x 6" (H)

Product weight capacity: up to 300 lbs

ROHO Size: 19" (W) x 34" (L) x 3" (H)

\*Please specify number of ROHO inserts  
(maximum of three)

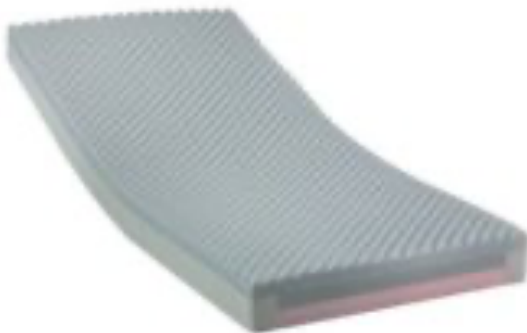


---

## V6 Mattress

Dimensions: 36" (W) x 80" (L) x 6" (H)

Product weight capacity: up to 250lbs



# Hospital Beds

Individuals registered with ALS Canada are eligible to receive bed rails, an over bed table, and one hospital bed. Bed extenders are available on a per need basis.



## Electric Hospital Bed

Bed height: 15" to 23" (measurement from floor to bed deck)

Sleep surface: 36" (W) x 80" (L)

Product weight capacity:

- 350lbs patient weight
- 450lbs inclusive of all accessories

Overall dimensions: 36" (W) x 88" (L)

Rails: full or half



## Etude Hospital Bed

Bed height: 7.8" to 26.5" (measurement from floor to bed deck)

Sleep surface: 36"(W) X 80" (L)

Product weight capacity:

- 360lbs patient weight
- 440lbs inclusive of all accessories

Rails: full or half



## Overbed Table

Dimensions: varied and adjustable



## Bed Rails

Dimensions: varied and adjustable



ALS Society of Canada | Société Canadienne de la SLA

T 416-497-2267 | TF 1-800-267-4257

Amyotrophic Lateral Sclerosis Society of Canada Charitable Registration Number: 10670-8977-RR0002  
Numéro d'enregistrement d'organisme de bienfaisance de la Société canadienne de la sclérose latérale  
amyotrophique: 10670-8977-RR0002